



Addressing the Nutritional Needs of Patients with Diabetes in Acute Care

1 in 5

hospitalizations involves a patient with a known diagnosis of diabetes.¹

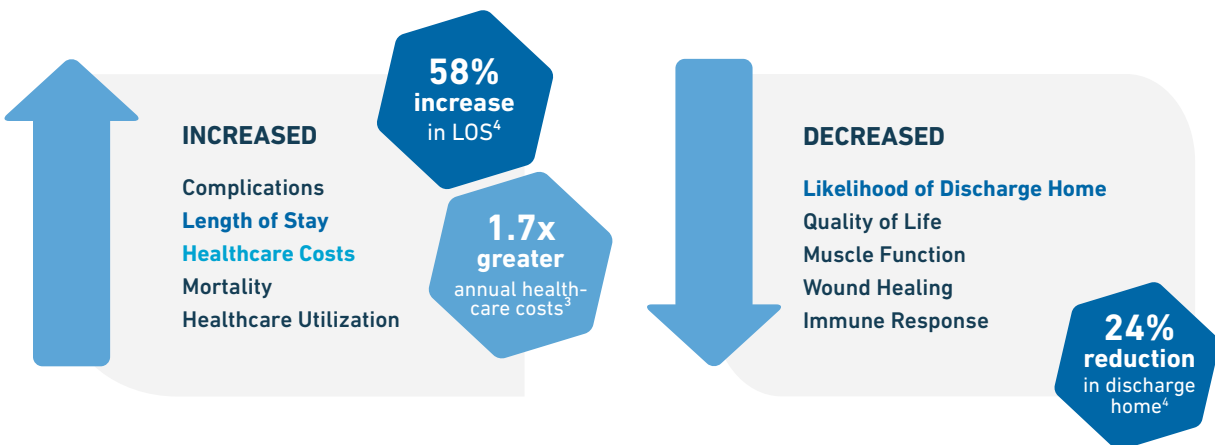


96%

of older hospitalized patients with [or at-risk of] malnutrition do not meet the recommended protein intake of ≥ 1.2 g protein/kg/day.²



Malnutrition is common among hospitalized older adults and is associated with worse clinical & health economic outcomes in older patients with diabetes.³⁻⁶





Oral nutritional supplements designed specifically for people with diabetes can help fill nutritional gaps and support blood glucose management as part of a balanced diet.

BOOST GLUCOSE CONTROL®	NUTRITION	BOOST GLUCOSE CONTROL® MAX 30g Protein
237 mL	VOLUME	325 mL
0.8 kcal/mL	CALORIC DENSITY	0.5 kcal/mL
190	CALORIES	160
16	PROTEIN (g)	30
16	CARBS (g)	4-6
4	TOTAL SUGARS (g)	1
7	FAT (g)	2-3
25	VITAMINS & MINERALS	25

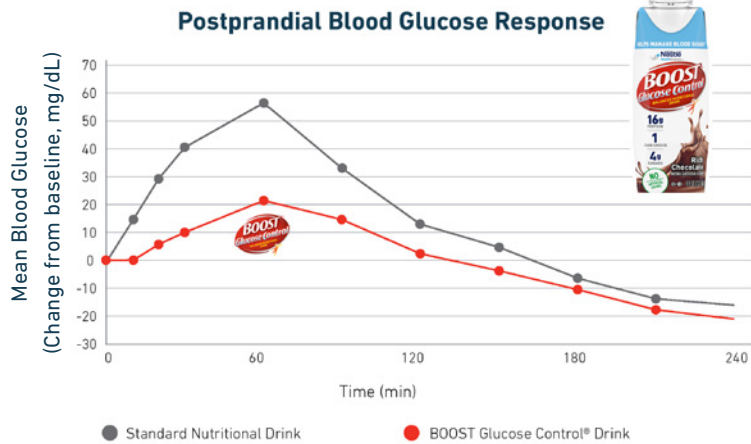
190 kcal
16 g protein



160 kcal
30 g protein



In a recent clinical trial, consumption of BOOST Glucose Control® Drink led to a significantly lower mean blood glucose response vs. a standard nutritional drink in adults with type 2 diabetes.⁷



ORDERING INFORMATION

- BOOST Glucose Control® MAX 30g Protein Vanilla, 4 x 11 fl oz | 12468559
- BOOST Glucose Control® MAX 30g Protein Chocolate, 4 x 11 fl oz | 12468590
- BOOST Glucose Control® Chocolate, 24 x 237 ml | 4390011642
- BOOST Glucose Control® Vanilla, 24 x 237 ml | 4390066110
- BOOST Glucose Control® Strawberry, 24 x 237 ml | 4390028680

Learn More & Request Samples via the Nestlé Medical Hub App



Incorporate BOOST Glucose Control® Drinks into a balanced diet as part of a medically supervised diabetes management plan. **Not a substitute for medication.**

1. Umpierrez GE et al. J Clin Endocrinol Metab. 2012;97(1):16-38. 2. Weijzen M, et al. NCP. 2020;35(4):655-663. 3. Ahmed N et al. BMJ Open Diabetes Res Care 2018;6:e000471 4. Sanz Paris A et al. Nutr Hosp 2013;28(3):592-599 5. Pamukg et al. Int J Diabetes Devel Countries. 2020 6. Sanz-Paris A et al. JPEN 2020;44(8): 1492-1500. 7. Klosterbuer A et al. JPEN. 2021;45:S194-195.

All trademarks are owned by Société des Produits Nestlé S.A., Vevey, Switzerland, or used with permission. © 2021 Nestlé.