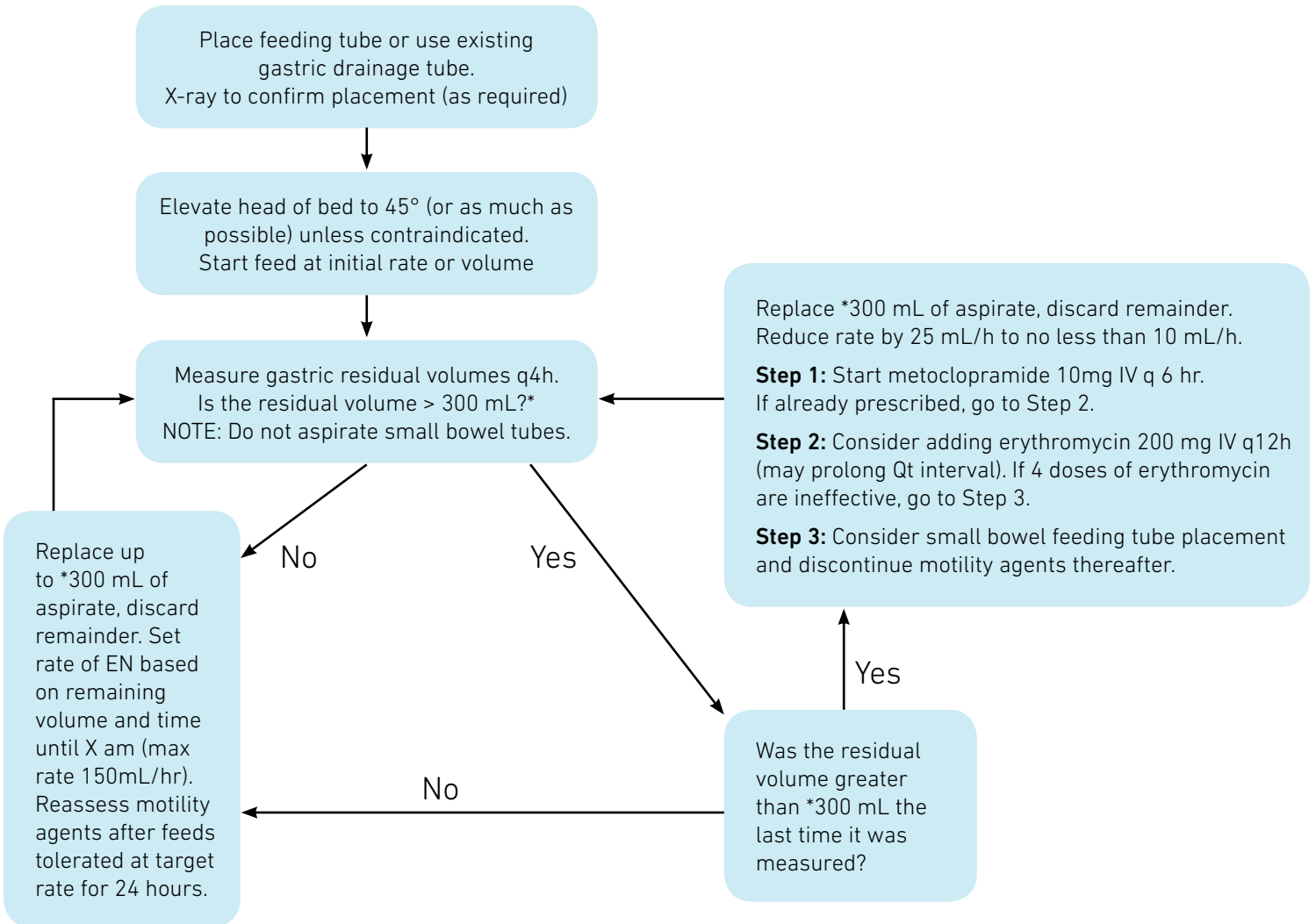




GASTRIC FEEDING FLOW CHART



*Sites may customize the gastric residual volume threshold in keeping with their current practice and best available evidence which supports a gastric residual volume between 250 – 500 mL. Source: 2012 Canadian Clinical Practice Guidelines www.criticalcarenutrition.com, 2009 ASPEN/SCCM Guidelines.

A collaboration of:

Please note: These are suggested guidelines for enteral feeding based on Enhanced Protein-Energy Provision via the Enteral Route in Critically Ill Patients (PEP uP) Protocol. They are not intended as a substitute for medical advice.



Critical Care Nutrition



Nestlé Health Science
NOURISHING PERSONAL HEALTH